

Wellsford Property

Commercial

\$500,000

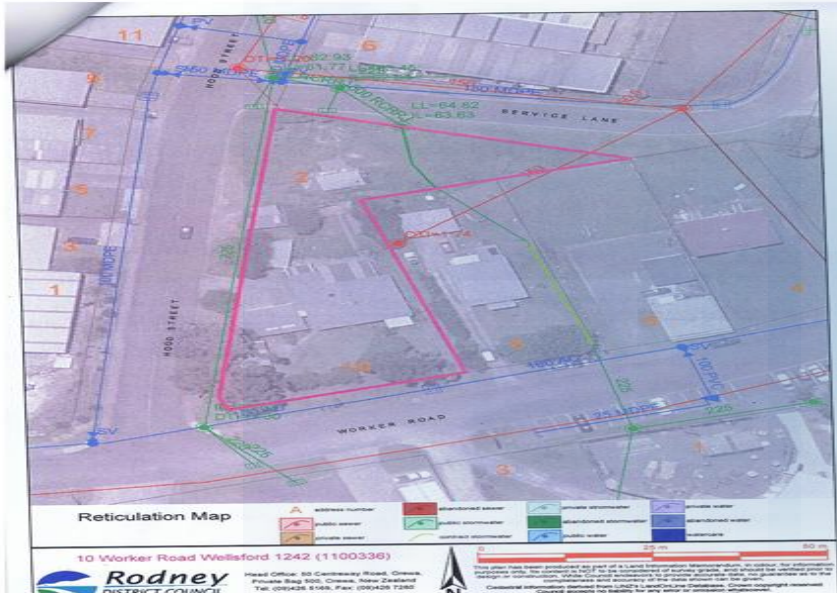
10 Worker Rd Wellsford Wellsford Rodney , Auckland

DETAILS

Category: Commercial
Property Type: Development
Status: For sale
Land Area: 2125m²
Floor Area: 305m²
Agency Ref: N/A

OPEN HOME

No Information



This property is situated on the northeastern side of Worker rd and Hood st and backs on to a tar sealed service lane. A good location for commercial use it is within a well established industrial area and has street frontages on 3 sides.

Front two thirds 1350sq mt is zoned commercial and retail service and the rear 775sq mt is zoned industrial so it can be used for any type of business purpose.

It has a 4 bedroom house with 2 garages a carport and a separate building.

This property has been used for a commercial business and the house for private and office purposes.

This property is +GST