

STUNNING AND STYLISH IN SOVEREIGN

Residential

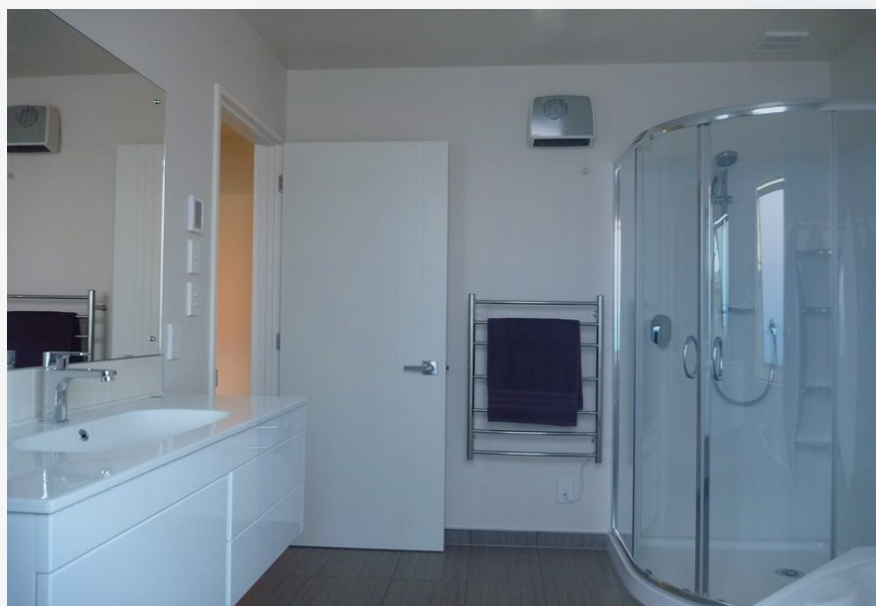
\$549,000+

27 Sovereign Boulevard Kaiapoi Waimakariri , Canterbury

4 Beds

2 Baths 2 Living Area

2 Garage



DETAILS

Category: Residential

Property Type: House

Status: For sale

Land Area: 703m²

Floor Area: 230m²

Agency Ref: N/A

OPEN HOME

Sun: 2:00pm-3:00pm

This modern, stylish 230m², 4 bedroom, 2 bathroom home sits well positioned on a 703m² section in the much sought after subdivision of Sovereign Palms, Kaiapoi. This spacious family home has been designed to maximise the majority of the days sun to the living, dining, kitchen, lounge and master bedroom with 4mtr stacking sliders opening to make a wonderful indoor/outdoor flow onto the outside patio. The forth bedroom can be easily converted into an office/study depending on your needs. The house boasts a lot of features, some include: - All tiled areas except the laundry has undertiled heating - Digital coded front door lock - 6 Vent ducted air conditioning system - Excel internal vacuum system -Quality tapeware and door handles - Security Alarm - Landscaped with Irrigation system - Directly opposite childrens playground - Westside boundary is a walkway reserve. and plenty more. Situated only a short distance from Kaiapoi's town centre and golf course, this house would make a perfect home for anyone wanting to live in a new upcoming area. Should you have any questions, please feel free to contact Steve or Chris