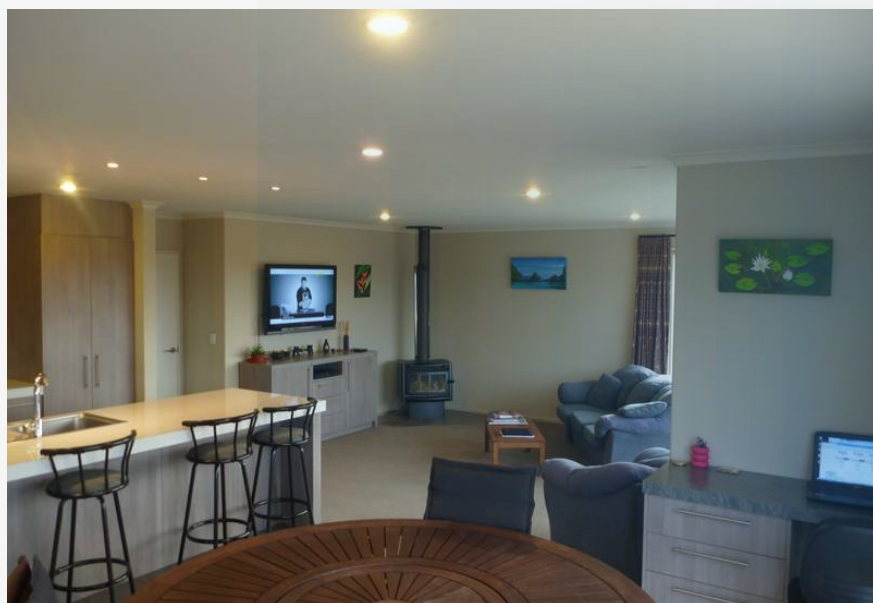


## 6 Bedroom, Pool,spa & Option 1 Bed Flat

## Residential

- 6 Beds
- 2 Baths 2 Living Area
- 3 Garage

15 Frame Crescent Rolleston Selwyn , Canterbury



5 bedroom study. 2 living area cream brick home set on mature manicured 1267m<sup>2</sup> site in quiet cul-de-sac, offers spectacular family living with abundance of lawn, in-ground swimming pool solar and heated and filtered with heat-pump and security fence, large covered pool side area. Large well appointed family sized kitchen interacting with dining family living smart bathroom and ensuite, tasteful carpets, drapes and furnishings. House is well heated with 2 heat pumps 1x gas fireplace and 1 x log-burner to keep you warm on those cold southern days. Triple vehicle garaging with plenty of parking space. Viewers will not be disappointed. 63m<sup>2</sup> permitted 1 bedroom self contained pool side flat, separate from house with matching cladding to main house the flat will be fully complete mid December. Photos of flat will be put up once it is completed Inquires and viewing please contact Wayne 021 288 4300

### DETAILS

Category: Residential

Property Type: House

Status: For sale

Land Area: 1267m<sup>2</sup>

Floor Area: 298m<sup>2</sup>

Agency Ref: N/A

### OPEN HOME

No Information